

Special Points of Interest

- New Rochelle was the 4th safest city nationwide out of 62 cities with comparable population in 2009. Marks the tenth consecutive year as one of the five safest. (source-USDOJ “Crime in the United States”)
- Responded to over 56,000 calls for service
- Part 1 crimes decreased 12% from 2009
- Lowest crime rate among similar municipalities in Westchester County as well as similar municipalities throughout the state
- Received semi-finalist IACP/Motorola Webber Seavey Award for Quality in Law Enforcement – Third award in last 10 years
- Installed In-Car Video Systems in sector cars and traffic vehicles

The City of New Rochelle Police Department Annual Report 2010



Patrick J. Carroll
Police Commissioner

Anthony D. Murphy
Deputy Police Commissioner



CONTENTS

Mission Statement	3
Organizational Chart	4

COMPARISON STATISTICS

Part 1 Crimes	5-6
Total Arrests	7
Crime Arrest Index	7
Drug Arrests	7
Juvenile Arrests	7
Arrests	8
Traffic Enforcement	9
Parking Enforcement	9
Driving While Intoxicated	9
City Code Enforcement	9
Crime Rate - Similar Municipalities Nationwide	10
Crime Rate - Similar Municipalities Statewide	11
Crime Rate - Westchester Municipalities	12

PERSONNEL

Department Demographics	13
Sworn Personnel By Rank	13
Civilian Personnel By Title	13
Sworn Personnel Age	14
Sworn Personnel Longevity	14
Department Personnel By Division	15

POLICE SERVICES DIVISION

Patrol Tours	16
Calls for Service	17
Driving While Intoxicated Arrests By Tour	17
Taxi Licenses	17
Police and Community Together (PACT)	18
Juvenile Cases	18
Police-Community Events	19-20
Community Resources Coordinator	20
Special Operations Unit	21-22
Traffic Unit	21-22

New Rochelle Police Department

CRIMINAL INVESTIGATIONS DIVISION

Organization/Personnel	23
Investigations	24
Arrests	25
Forensic Unit Activity	25

STAFF SERVICES DIVISION

Organization/Personnel	26-27
------------------------	-------

INTERNAL AFFAIRS UNIT

Organization/Investigations	28
-----------------------------	----

QUALITY ASSURANCE UNIT

Organization/Purpose	29
----------------------	----

NEW ROCHELLE POLICE FOUNDATION

Purpose/Programs	30
------------------	----

New Rochelle Police Department Patch	31
--------------------------------------	----



Third Tour Roll Call

Mission

The mission of the New Rochelle Police Department is to provide a professional community orientated police service designed to protect life and property and maintain order while assuring fair and equal treatment to all.

Vision

We will provide a quality police service that merits the public's trust and ensure the overall success and general welfare of the community.



Values

Ethics:

We will demonstrate integrity and honor in all our actions

Valuing People:

We will treat everyone with dignity and respect, protecting the rights and well being of others

Loyalty:

We will be loyal to the community, to the department, and its members, and to the standards of our profession

Fairness:

Our decisions will be balanced—moral, legal and without personal favoritism

Authority:

We recognize that our authority is derived from the people we serve

Diversity:

We appreciate one another's differences and recognize that our unique knowledge, skills, abilities and backgrounds bring strength and character to our organization

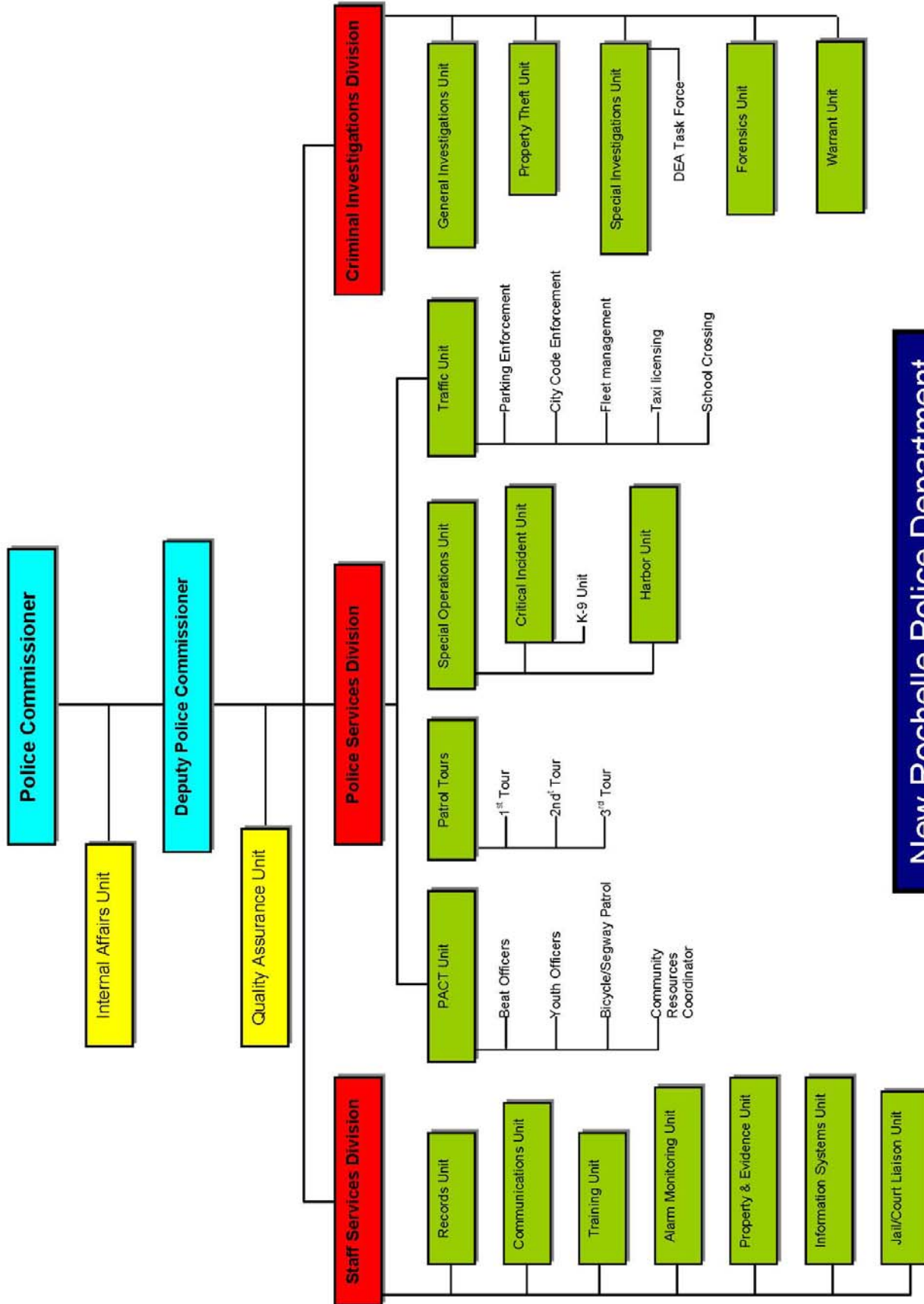
Commitment:

We believe that our time spent in the workplace should be devoted to the delivery of quality police services

Conduct:

We recognize that our conduct, personal and professional is inseparable from the reputation of the Department and must be moral, sober and judicious

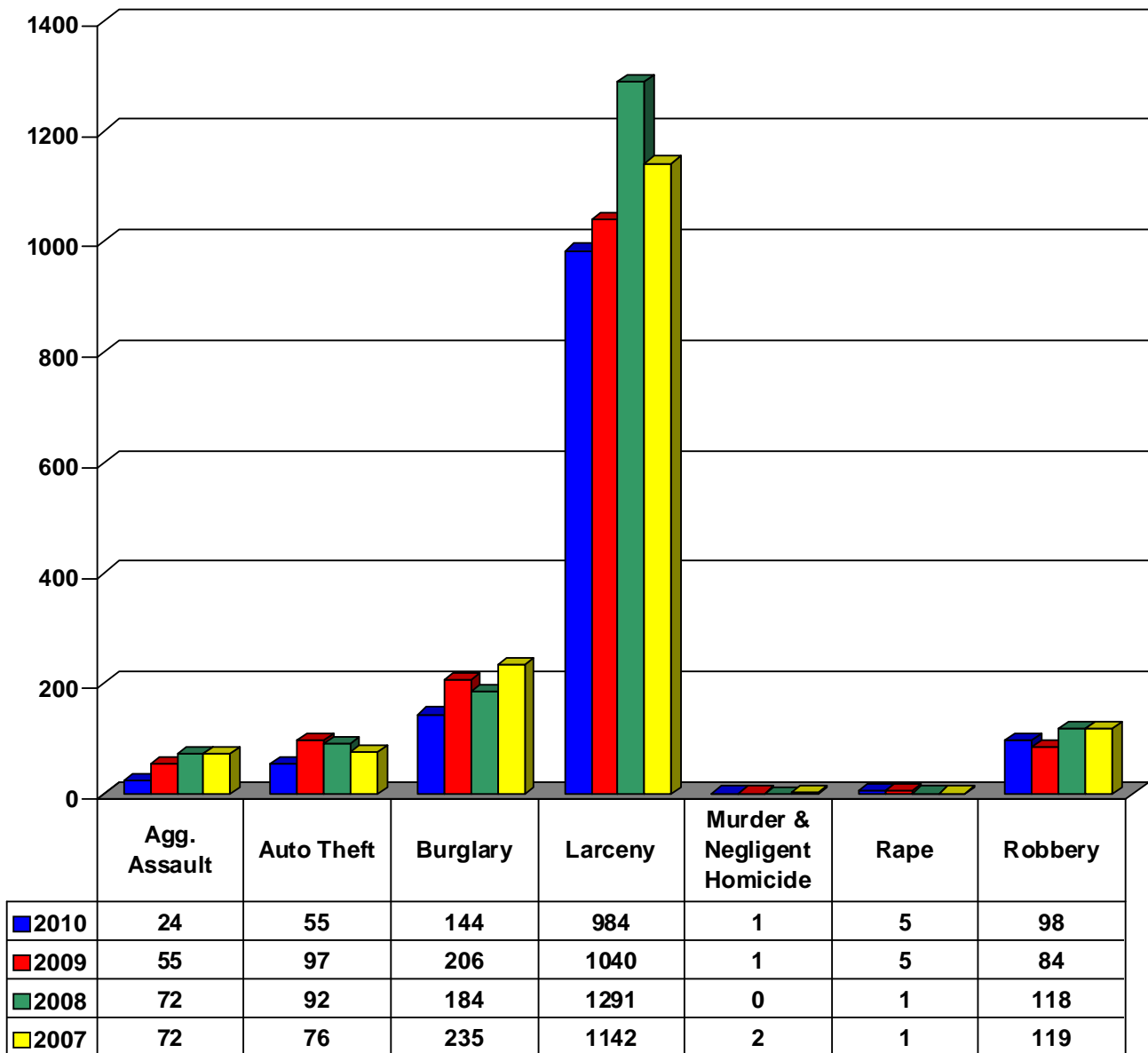
New Rochelle Police Department



**New Rochelle Police Department
Organizational Chart**

COMPARISON STATISTICS

Part 1 Crime Changes



Percentage Change in Part 1 Crimes 2009-2010 and 2001-2010

	2010	2009	2008	2007	Percent Change in Rate 2009 -2010	Percent Change in Rate 2001 -2010
Aggravated Assault	24	55	72	72	-56%	-63%
Auto Theft	55	97	92	76	-43%	-67%
Burglary	144	206	184	235	-31%	-31%
Larceny	984	1040	1291	1142	-5%	-21%
Murder & Negligent Homicide	1	1	0	2	0%	100%
Rape (forcible)	5	5	1	1	0%	-17%
Robbery	98	84	118	119	17%	-24%
Total	1311	1488	1758	1647	-12%	-29%



Youth Shamrock Fishing Trip

Total Arrests

	2010	2009	% Change
	1,991	2,218	-10%

Crime Arrest Index

Crime	2010	2009	% Change
Assault (Aggravated)	63	56	12%
Burglary	28	55	-49%
Larceny	282	221	28%
Murder & Negligent Homicide	1	4	-75%
Rape	4	3	33%
Robbery	60	50	20%
Total	438	389	13%

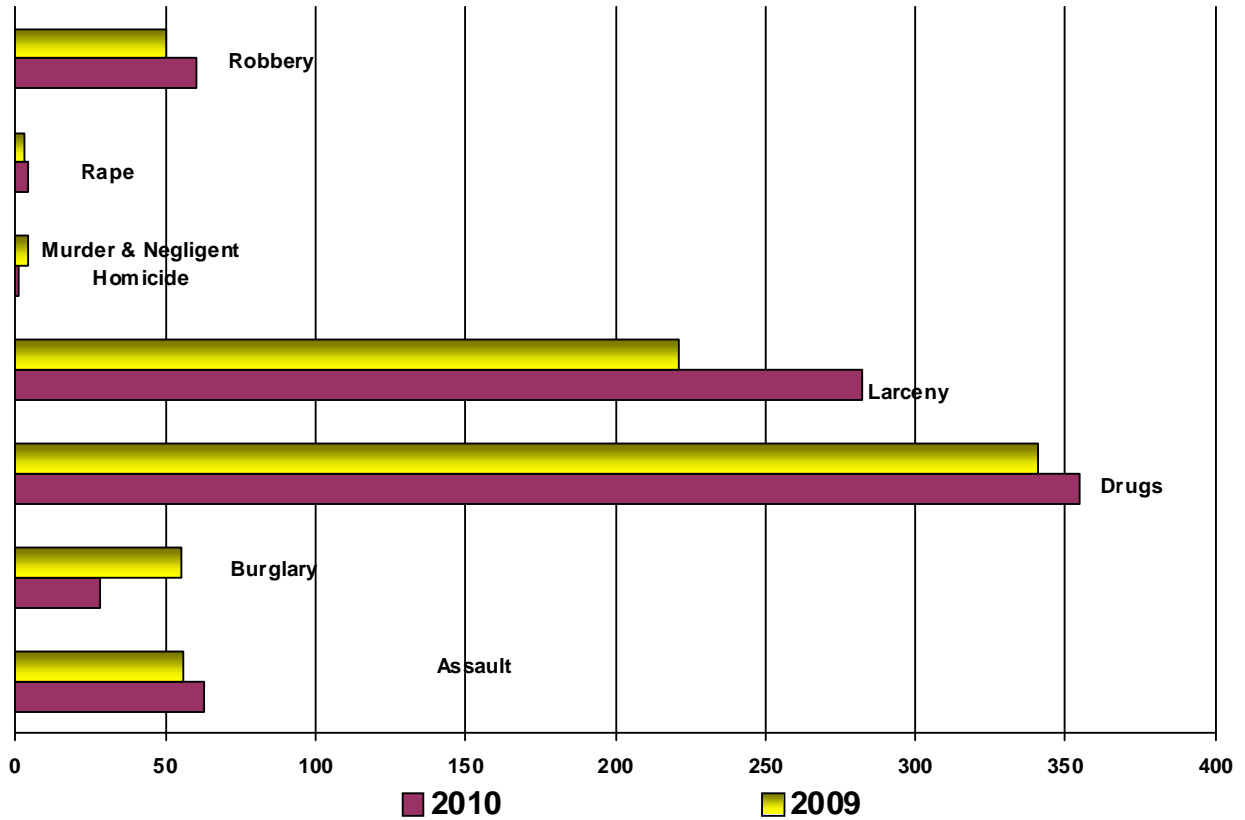
Drug Arrests

	2010	2009	% Change
Controlled Substances and Marijuana	355	341	4%

Juvenile Arrests

P.A.C.T.	2010	2009	% Change
Felonies	15	10	50%
Misdemeanors	39	39	0%
Other	5	2	150%
Total	59	51	16%
PATROL	25	22	14%
Total	84	73	15%

Arrests 2010 vs. 2009



New Rochelle Police Department accepts Semi-Finalist IACP Motorola/Webber Seavey Award for Quality in Law Enforcement in Orlando, Florida

(From left to right) Lieutenant William Childs, Lieutenant Cosmo Costa, Debora Courtright, Vice President, North America Strategic Projects Team, Motorola Solutions and Toronto Police Service Chief William Blair

Traffic Enforcement

Violation	2010	2009	% Change
Full Stop	852	477	79%
Red Light	656	479	37%
Speeding	742	867	-14%
All Other	9,610	10,520	-9%
Total	11,860	12,343	-4%

Parking Enforcement

	2010	2009	% Change
Parking Violation Summonses	80,180	89,271	-10%

Double Parking Enforcement

	2010	2009	% Change
Double Parking Violation Summonses	786	1,409	-44%

Driving While Intoxicated Arrests

	2010	2009	% Change
DWI Arrests	102	90	13%

City Code Enforcement

Violation	2010	2009	% Change
Dogs at Large	36	38	-5%
Public Drinking	461	413	12%
Garbage & Litter	396	297	33%
Offensive Matter	148	138	7%
Public Parks Curfew	246	312	-21%
Noise	415	246	69%
Peddlers	37	42	-12%
Motor Vehicle Nuisances	90	132	-32%
Icy Sidewalks	92	64	44%
Taxi	90	102	-12%
Alcohol Beverage Control	107	154	-30%
Cabaret Licensing	3	4	-25%
Warning Summonses	513	605	-15%
Total	2,634	2,547	3%

New Rochelle Police Department

2009 Crime Rates for All Cities from 70,000 to 80,000 in Population

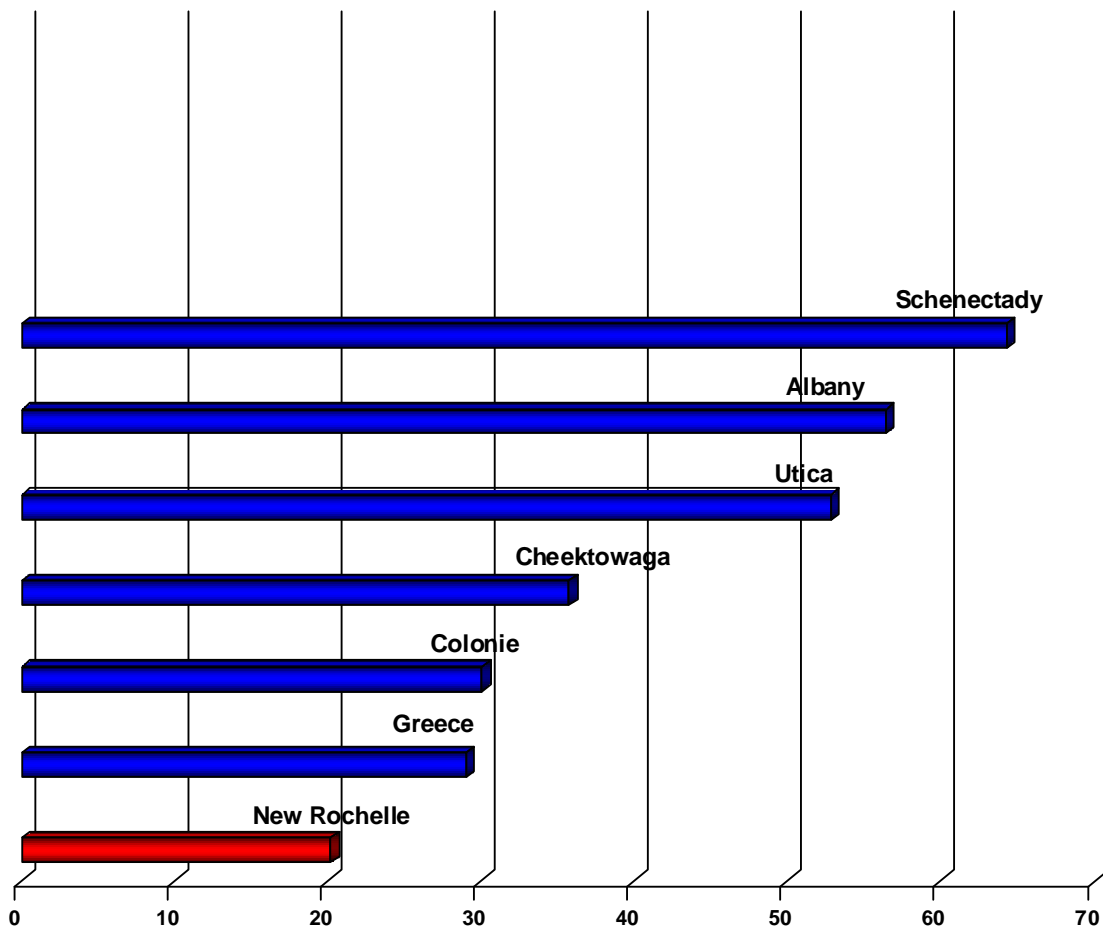
Rank	City	Population	Crime Index Total	Crime Rate Per 1000 Persons
1	Lake Forest, CA	75,509	1073	14.21
2	Meridian, ID	71,581	1126	15.73
3	Chino Hills, CA	74,650	1212	16.23
4	New Rochelle	74,320	1488	20.21
5	Tustin, CA	72,286	1471	20.35
6	Farmington Hills, MI	78,140	1628	20.80
7	Danbury, CT	79,729	1666	20.90
8	St. George, UT	75,391	1632	21.67
9	Clifton, NJ	78,124	1890	24.19
10	Baldwin Park, CA	77,539	1956	25.23
11	Wyoming, MI	78,565	1957	27.73
12	Buena Park, CA	79,525	2229	28.03
13	Apple Valley, CA	72,200	2030	28.11
14	Redwood City, CA	73,905	2092	28.30
15	Appleton, WI	70,294	2049	29.14
16	Napa, CA	74,736	2181	29.18
17	Lynwood, CA	70,032	2058	29.38
18	League City, TX	74,801	2208	29.51
19	Newport Beach, CA	79,912	2364	29.58
20	Bethlehem, PA	72,349	2151	29.73
21	Mountain View, CA	71,423	2152	30.13
22	Somerville, MA	75,112	2267	30.18
23	Alameda, CA	70,372	2154	30.60
24	Lakewood, CA	78,33	2483	31.69
25	Bellflower, CA	73,038	2401	32.87
26	Hoover, AL	71,919	2376	33.03
27	Union City, CA	72,666	2499	34.39
28	Lynchburg, VA	73,735	2557	34.67
29	Pawtucket, RI	71,787	2576	35.88
30	Jacksonville, NC	77,508	2839	36.62
31	Westland, MI	78,149	2876	36.80
32	Lawrence, MA	70,670	2660	37.63
33	Springdale, AR	70,935	2701	38.07
34	Redlands, CA	70,360	2706	38.45
35	Deerfield Beach, FL	74,509	2876	38.59
36	Scranton, PA	71,843	2906	40.44
37	Fayetteville, AR	75,120	3233	43.03
38	Hemet, CA	72,417	3215	44.39
39	Merced, CA	78,693	3583	45.53
40	Southfield, MI	75,074	3491	46.50
41	Lorain, OH	70,410	3324	47.20
42	San Leandro, CA	77,676	3854	49.61
43	Bloomington, IN	71,845	3581	49.84
44	New Britain, CT	70,368	3569	50.71
45	Largo, FL	72,567	3692	50.87
46	Asheville, NC	74,923	4116	54.93
47	St. Joseph, MO	76,436	4235	55.40
48	Lake Charles, LA	70,975	4069	57.33
49	Hammond, IN	76,085	4495	59.07
50	Baytown, TX	70,764	4,331	61.20
51	Melbourne, FL	77,854	4886	62.75
52	Santa Fe, NM	72,845	4582	62.90
53	Canton, OH	78,085	4924	63.05
54	Bryan, TX	73,111	4701	64.29
55	Edinburg, TX	74,611	4936	66.15
56	Wilmington, DE	72,580	4973	68.51
57	Kalamazoo, MI	71,664	5028	70.16
58	Gastonia, NC	73,060	5181	70.91
59	Youngstown, OH	72,008	5129	71.22
60	Camden, NJ	78,980	5815	73.62
61	Albany, GA	75,734	5600	73.94
62	Longview, TX	77,663	6206	79.90

Source: USDOJ Crime in the United States 2009

2009 Crime Rate Per 1000 for Similar Municipalities in New York

City	Population	Part 1 Crimes	Per 1,000
New Rochelle	74,320	1488	20.21
Greece	93,274	2710	29.05
Colonie	78,003	2345	30.06
Cheektowaga	77,772	2780	35.74
Utica	57,831	3057	52.86
Albany	93,445	5271	56.40
Schenectady	61,087	3928	64.30

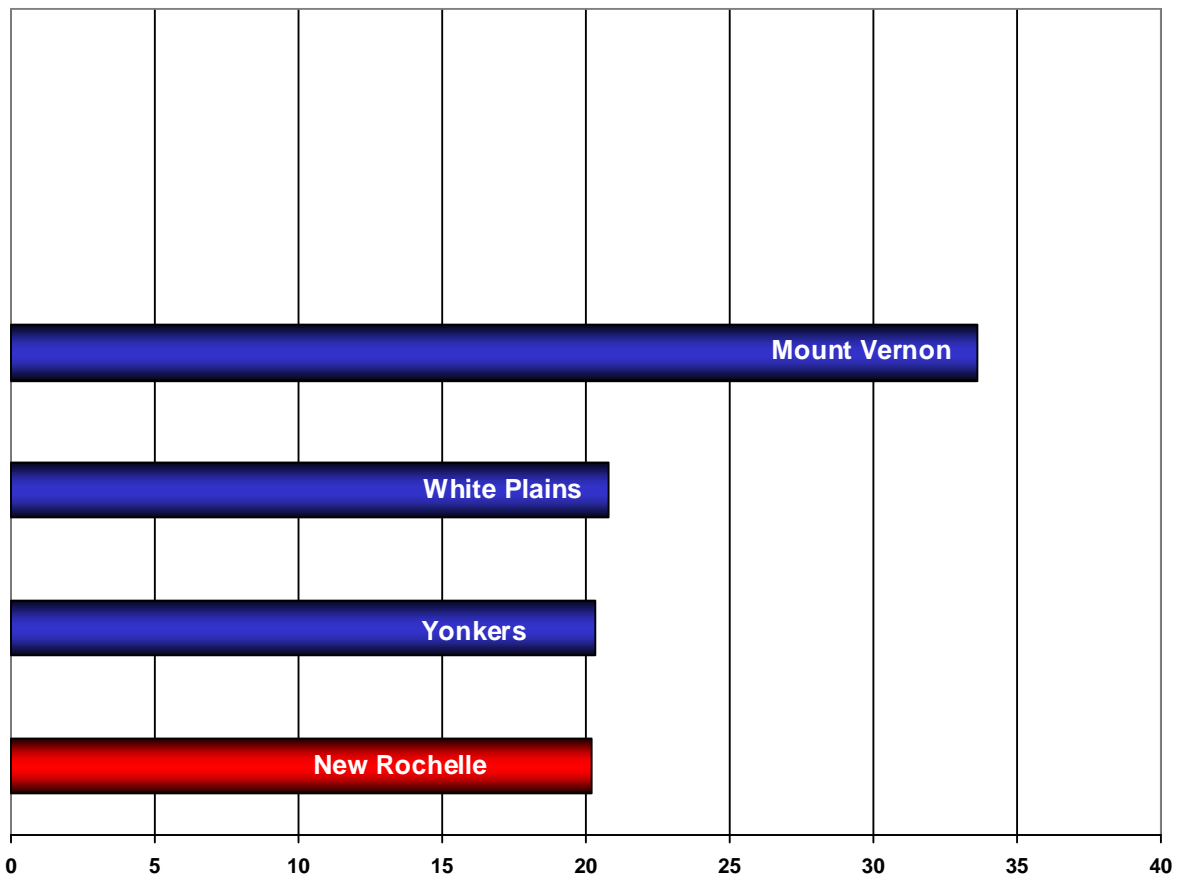
2009 Crime Rate Per 1000



2009 Crime Rate Per 1000 For Cities in Westchester

City	Part 1 Crimes	Per 1,000
New Rochelle	1488	20.21
Yonkers	4110	20.33
White Plains	1204	20.82
Mount Vernon	2307	33.59

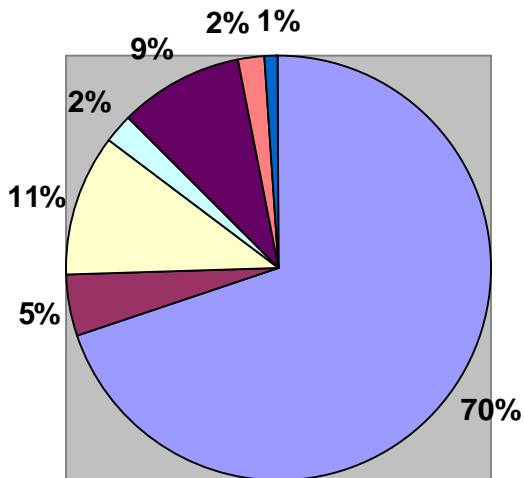
2009 Crime Rate Per 1000



2010 Department Demographics

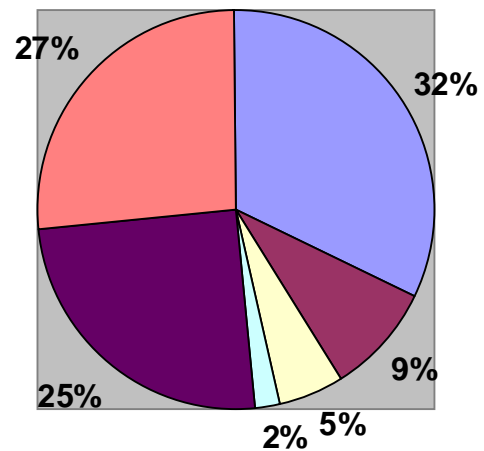
	M/W	F/W	M/B	F/B	M/H	F/H	M/A	M/I	TOTAL
Police Commissioner	1								1
Deputy Police Commissioner	1								1
Captain	3								3
Lieutenant	10								10
Sergeant	15	2	7		1				25
Detective	23		7	2	3	2			37
Police Officer	65	6	4	2	12	1	2		92
Total Sworn	118	8	18	4	16	3	2		169
Community Service Officer	10	7	4	7	3				31
Civilian Employee	1	5		3					9
School Crossing Guard	3	6	1	5		1			16
Total Non-Sworn	14	18	5	15	3	1			56
Total Employees	132	26	23	19	19	4	2	0	225

Percentages for Total Sworn Officers



■ M/W
 ■ F/W
 ■ M/B
 ■ F/B
 ■ M/H
 ■ F/H
 ■ M/A

Percentages for Total Non-Sworn Employees



■ F/W
 ■ M/B
 ■ M/H
 ■ F/H
 ■ M/W
 ■ F/B

Personnel

Sworn Personnel by Age

Age of Officer	Number of Officers
21-24	2
25-29	22
30-35	27
36-40	37
41-50	62
51-65	18
Average Age	40.8

Sworn Personnel by Longevity

Years	Number of Officers
> 1	5
1 - 2	9
3 - 5	28
6 - 10	24
11 - 15	29
16 - 20	48
21 +	25
Average Longevity	13.1



2010 Citizen Police Academy Harbor Tour

Police Services Division

Personnel	163
Captains	1
Lieutenants	7
Sergeants	20
Detectives	17
Police Officers	89
Community Service Officers	11
School Crossing Guards	16
Civilian Employees	111

Criminal Investigations Division

Personnel	23
Captains	1
Lieutenant	1
Sergeants	3
Detectives	18

Staff Services Division

Personnel	37
Captains	1
Lieutenants	1
Sergeants	2
Detectives	2
Police Officers	3
Community Service Officers	20
Civilian Employees	8

Internal Affairs Unit

Personnel	1
Lieutenant	1

ACTIVITY

Police Services Division

The Police Services Division is organized under the command of Captain Robert Gazzola and is responsible for providing uniform police services throughout the city. The Police Services Division is divided into five units: Patrol Unit, PACT (Police And Community Together) Unit, Special Operations Unit, Traffic Unit and the Community Resources Coordinator.

The Department has three patrol tours: 12 a.m. - 8 a.m., 8 a.m. - 4 p.m., and 4 p.m. - 12 a.m. that are staffed 365 days a year. Officers assigned to patrol tours are the primary responders to calls for service. Officers assigned to the Police Services Division are responsible for a variety of services, which include:

- Responding to All Calls for Service
- Conducting Preliminary Investigations of Crimes
- Responding to Medical Emergencies
- Responding to Fire Emergencies
- Handling Emotionally Disturbed Persons
- Investigating Automobile Accidents
- Effecting Arrests of Persons Committing Crimes
- Enforcing Parking Regulations
- Enforcing Traffic Laws
- Enforcing City Codes
- Providing Patrol of Assigned Areas



Firearms Qualifications Blue Mountain

Calls for Service 2010 vs. 2009

Type of Call	2010	2009
Alarms	4,512	3,568
Assault (simple)	243	203
Auto Accidents		
Fatalities	0	1
Personal Injury	309	307
Property Damage	2,479	3,304
Auto Thefts	61	81
Burglary	144	172
Emergency Medical	4,516	4,417
Larceny	1,350	1,439
Manslaughter	0	3
Murder	1	1
Rape (all rapes)	5	4
Robbery	98	83
All Other	42,785	40,633
TOTAL CALLS	56,503	54,216

Driving While Intoxicated Arrests by Tour 2010

	12 X 8	8 X 4	4 X 12	Total
DWI Arrests	47	7	48	102

Taxi Licenses 2010

Medallions Issued	150
Medallions Transferred	17
Taxi Driver's Licenses Issued	319

New Rochelle Police Department



Detective Terrence Fudge (left) and Detective Brianne Smith (right) at New Rochelle Explorers Post 1701 Graduation

PACT Unit

The PACT Unit (Police And Community Together) is supervised by Lieutenant William Childs and is comprised of one sergeant, nine beat officers, four conditions officers, two youth officers and the Community Resources Coordinator. The Unit's mission is to implement the PACT philosophy of police and the public working together to bring about lasting solutions to community problems. This is accomplished by the beat officers interacting with school associations, civic groups, youth groups, and other organizations. The two youth officers are the Department's **D.A.R.E.** instructors. They provide **D.A.R.E.** instruction to all of the fifth grade children in New Rochelle elementary schools. In 2010, over 1100 students were instructed in the **D.A.R.E.** program. Youth officers also have the primary responsibility for the investigation of crimes committed by juveniles.

PACT Personnel	18
Lieutenants	1
Sergeants	1
Detectives	8
Police Officers	8

Juvenile Cases By Youth Officers			
	2010	2009	% Change
Cases Followed Up	285	273	4%
Incident Type			
Missing Person	105	109	-3%
Threats/Harassment	23	32	-28%
Larceny	29	19	53%
Assault	29	24	21%
Dispute	15	9	40%
Criminal Mischief	7	9	-22%
PINS	7	3	133%
Trespass	3	6	-50%
Graffiti	12	12	0%
Robbery	8	4	100%
Sex Offense	2	2	0%
Weapons	6	1	500%
Personal Welfare	18	7	157%
Menacing	3	6	-50%
Other	47	22	113%

Below are some of the many events that the Department participated in with the community during 2010:

- Provided **G.R.E.A.T.** instruction to all sixth grade students in the city
- Provided **D.A.R.E.** instruction to all fifth grade students in the city
- Organized **D.A.R.E.** dances and various trips during the school year
- Provided assistance to Youth Court
- Held annual "Youth Day" event
- Held "Healthy Kids Fair" at YMCA
- Held domestic violence courses at middle schools and high schools
- Held dating violence seminars at middle schools
- Inspected child safety seats to insure proper installation
- Participated in SADD (Students Against Drunk Driving) event at New Rochelle High School
- Assisted with Monroe College Summer Law Program
- Organized Youth Fishing Trip
- Worked with Hope Community Kitchen to distribute turkeys to underprivileged families

New Rochelle Police Department

- Fingerprinted youths at schools and at other events
- Provided safety lectures to first grade students
- Provided crime prevention lectures to community groups
- Provided assistance to New Rochelle High School Forensics class mock crime scene
- Attended Boy/Girl Scout meetings for “Police Awareness” and “Personal Safety Seminars”
- Organized Christmas gift-giving event at child day care centers and other locations
- Provided assistance to Sound Shore Medical Center in giving gifts to over 1000 children
- Held VIN etching and “Watch Your Car” events
- Provided tours of Police-Court facility to school children
- Held Gang Awareness seminar at Middle Schools
- Continued SMART (Security Measures Against Retail Theft) Program
- Continued Explorer Program
- Participated in National Night Out – Bicycle Give Away
- Organized Police-Clergy breakfast
- Assisted with filming of underage drinking public service announcement
- Assisted with annual soap box derby

Community Resources Coordinator

The Community Resources Coordinator is a police officer who reports directly to the commander of the Police Services Division. She provides crisis intervention services to residents experiencing serious family and personal problems. This is accomplished through information referral and counseling.

Community Resources Coordinator			
	2010	2009	% Change
Cases Followed Up	1,832	1,958	-6%
Family Dispute	1,086	1,180	-8%
Personal Welfare	153	167	-8%
Mental Disorder	64	80	-20%
Assault	65	68	-4%
Attempted Suicide	22	19	16%
Sexual Abuse	3	6	-50%
End. Welfare Child	16	6	166%
Harassment	154	181	-15%
Other	269	251	7%

Special Operations Unit

The Special Operations Unit is supervised by Lieutenant William Schulman and is divided into two subunits: Critical Incident Unit and the Harbor Unit.

Critical Incident Unit

The Critical Incident Unit is comprised of three teams. A sergeant, four police officers and a K-9 unit, made up of a police officer and a trained police dog, staff each team.

Responsibilities include: supplement the patrol unit, respond to calls of emotionally disturbed persons, respond to critical incidents, and perform tactical entries and K-9 response to burglary scenes, lost person investigations and weapons recovery.

Harbor Unit

The Harbor Unit is a seasonal unit, staffed by a sergeant, four police officers and five assistant harbormasters. The unit patrols the waters of the Long Island Sound, enforcing navigation laws and promoting boater safety. In addition, the Department has trained SCUBA divers available to respond to in-water emergencies.

Traffic Unit

The Traffic Unit is supervised by Lieutenant George Marshall. A sergeant and four police officers are assigned to this unit. The Traffic Unit has five subunits: Taxi Licensing, School Crossing Guards, Parking Enforcement, City Code Enforcement and Fleet Management.

Members of the Traffic unit are responsible for the following:

Sergeant reviews all accident reports filed by members of the Department, as well as supervising parking enforcement officers, ordinance officers and school crossing guards; Investigation of personal injury and fatal auto accidents, hit and run accidents, city property accidents; selective enforcement of the vehicle and traffic law, coordination of funeral, parade and special demonstration escorts.

Taxi Licensing Unit

The Taxi Licensing Unit is staffed by a sworn member and is responsible for the issuance of all taxi licenses and medallions. Registration of drivers and vehicle inspections is conducted annually.

New Rochelle Police Department

School Crossing Guards

School Crossing Guards are assigned to key intersections near schools for the purpose of assisting elementary school children to safely cross those intersections.

Parking Enforcement Unit

The Parking Enforcement Unit is comprised of seventeen community service officers, and provides parking enforcement throughout the city and facilitates the free flow of auto and pedestrian traffic in the downtown district of the city. Coverage is provided 7 days a week from 8:00 a.m. – Midnight.

City Code Enforcement Unit

The City Code Enforcement Unit is responsible for the enforcement of city code violations, including vehicle and traffic law statutes pertaining to abandoned vehicles.

Fleet Management

An officer assigned to the police services division fills this position, which oversees the purchase and maintenance of vehicles, as well as installation of equipment in vehicles.



Critical Incident Unit Cross-Training School



Criminal Investigations Division

The Criminal Investigations Division is organized under the command of Captain Joseph Schaller and is divided into five units: General Investigations, Property Theft, Special Investigations, the Forensics Unit and the Warrant Unit.

The division is responsible for the following functions:

- Prevention of Crime
- Detection and Arrest of Criminals
- Recovery of Lost and Stolen Property
- Location of Missing Persons
- Maintenance of Criminal Identification Files
- Civilian Identification for Governmental Licenses and Permits

General Investigations Unit

The General Investigations Unit is supervised by Lieutenant Christopher Hearle and is staffed by detective personnel. The unit is responsible for the investigation of all crimes committed against persons, accidental and suspicious death investigations, and non-criminal administrative investigations.

Property Theft Unit

The Property Theft Unit is supervised by a Criminal Investigations Division sergeant and is staffed by detective personnel. The unit is responsible for investigating property-related crimes.

Special Investigations Unit

The Special Investigations Unit is supervised by a Criminal Investigations Division sergeant and is staffed by detective personnel and police officers assigned to the division. The unit has the responsibility for investigating violations of the law pertaining to controlled substances, prostitution, gambling, and the sale of alcoholic beverages.

Forensic Unit

The Forensic Unit is staffed by a Criminal Investigations Division Detective and a civilian clerk during weekday business hours. The Forensic Unit performs the following functions: fingerprint all arrested persons, process crime scenes for physical evidence, maintain criminal identification records, and provide photographic services to the Department for criminal and non-criminal incidents.

Warrant Unit

The warrant officer is assigned to the Criminal Investigations Division and receives criminal warrants from the city court. Upon receipt of the warrant, the warrant officer completes numerous duties related to the tracking and disposition of these warrants.

INVESTIGATIONS

General Investigations Unit			
	2010	2009	% Change
Total Investigations	373	381	-2%
Closed with Results	59	56	5%
Closed Filed	275	291	-5%
Pending	38	34	12%

Property Theft Unit			
	2010	2009	% Change
Total Investigations	753	847	-11%
Closed with Results	555	599	-7%
Closed Filed	174	239	-27%
Pending	24	29	-17%

Special Investigations Unit			
	2010	2009	% Change
Total Investigations	171	295	-42%
Closed with Results	104	182	-43%
Closed Filed	33	63	-48%
Pending	34	50	-32%



**New Rochelle Explorers
Post 1701 Graduation
June 2010**

Arrests

General Investigations Unit			
	2010	2009	% Change
Total Arrests	100	85	15%
Felony	83	38	118%
Misdemeanor	17	44	-61%
Violation	0	3	-100%
Property Theft Unit			
	2010	2009	% Change
Total Arrests	91	153	-40%
Felony	35	88	-60%
Misdemeanor	53	65	-18%
Violation	3	0	300%
Special Investigations Unit			
	2010	2009	% Change
Total Arrests	107	151	-29%
Felony	40	43	-7%
Misdemeanor	51	82	-37%
Violation & Warrants	16	26	-38%
Forensic Unit			
	2010	2009	% Change
Total Fingerprints	952	1,769	-46%
Electronic Submissions	942	1,104	-15%
Pistol Permits	5	4	25%
Police Applicants	5	6	-17%
Latent Fingerprint Total	14	38	-63%
SAFIS Entered or Re-Entered	4	18	-78%
SAFIS Generated Hits	0	6	-100%
Elimination Prints	10	12	-17%
Arrests Corroborated	0	2	-100%
Arrests (Non SAFIS Match)	0	0	0%
CODIS Generated Hits	5	4	25%
NYS DNA Databank Specimen Submissions	29	29	0%

Staff Services Division

The Staff Services Division is organized under the command of Captain Kevin Kealy. It provides the Department with the many auxiliary services it needs in order to operate efficiently and effectively. The Division is divided into seven units. They are the: Training Unit, Records Unit, Property and Evidence Unit, Alarm Monitoring Unit, Communications Unit, Court Liaison Unit and the Information Systems Unit.

Training Unit

The Training Unit is supervised by Lieutenant Cosmo Costa. The following is a partial list of Training Unit activities for the year 2010:

- Ten week department-wide in-service training
- Hosted Reid Street Crimes Seminar
- Hosted Career and Tactical Survival for Women
- Conducted two firearms qualification cycles and CIU Long Arms qualifications
- Participated in joint training scenario with FBI, NYSP, Yonkers PD and Westchester County PD and ICE
- Conducted scenario-based training for CIU and Cross-Trained members utilizing simmunition
- Prepared and distributed ten general orders
- Completed Annual Report
- Published Medal Day Program
- Conducted Bicycle Officer training
- Scheduled members for outside courses such as Datamaster, RADAR, Standardized Field Sobriety Testing, Instructor Development, TASER Instructor, NYPD Auto Crime, Basic Law Enforcement Course, Field Training Officer Course, Emergency Psych Technician Course, IACP Advanced Tactical Leadership, Emergency Response to Domestic Biological Incidents, FBI First Responder Negotiations, WMD Operations Level Training and Crisis Intervention Officer Training
- Obtained state and federal funding through various grants
- Conducted ten-week Citizen Police Academy with twenty-five attendees
- Instructed Incident Command and Field Training Officer Courses at the Academy



Records Unit

The Records Unit is responsible for performing numerous administrative functions. These functions include, but are not limited to: Warrants, subpoenas, and other court orders are processed and disseminated by the unit. The unit processes requests from law enforcement agencies and private organizations seeking background checks on prospective employees. The unit also processes and manages the information and paperwork generated by police services activities. The unit also operates the Public Service Window, and further serves as the Department’s personnel section.

Property and Evidence Unit

The Property Clerk Unit maintains control over all lost, stolen, abandoned and recovered property, or property identified as evidence.

Alarm Monitoring Unit

The Alarm Monitoring Unit is responsible for enforcement of the various provisions of the City of New Rochelle Alarm Systems ordinance.

Communications Unit

The Communications Unit of the Department receives and manages requests for Police, Fire and Emergency Medical Service. A combination of police and civilian personnel perform the line functions of ERS operators, NYSPIN operators, police dispatchers and desk employees.

Court Liaison Unit

The Court Liaison Unit provides prisoner escorts between the cellblocks and the courts. The unit also reports the court’s activities and performs clerical duties as they relate to police operations.

Information Systems Unit

The unit is responsible for providing information services that facilitate the efficient gathering and dissemination of timely, accurate and complete information in a useable form to the members of the Department. Specifically, the unit acquires, distributes, installs and maintains: Local Area Networks, Personal Computers, Hardware, Software and Data Communications Networks.

Total Number of Detentions

	2010	2009	% Change
Males	1,952	2,162	-10%
Females	327	354	-7%

Internal Affairs Unit

Lieutenant Gary Robinson, who reports directly to the Police Commissioner, staffs the Internal Affairs Unit. The IAU Lieutenant is responsible for the investigation of all complaints regarding police department employees. The complaints may be generated internally or externally.

Supervisory personnel generate internal complaints when subordinate personnel fail to comply with department rules, regulations, guidelines, policies, or by the IAU Lieutenant through his inspections and investigations concerning employee compliance with rules, regulations, guidelines, and policies.

External complaints are complaints about police conduct that are generated by individuals who are not members of the Department. These types of complaints normally involve allegations of improper conduct on the part of police employees or questionable procedures. Regardless of the source, seriousness or apparent lack of seriousness of the complaint, each complaint is thoroughly investigated by the IAU Lieutenant.

In addition to the investigation of complaints the IAU Lieutenant conducts investigations as directed by the Police Commissioner and all incidents where officers have discharged their weapons or where prisoners have been injured. The IAU Lieutenant acts as liaison in civil cases between the Department and city attorneys, insurance companies, and their respective investigators. He coordinates interviews with department employees and witnesses, and researches and retrieves reports and photos for a defense of these cases. He testifies as a representative of the Police Department in order to enter official documents into evidence and performs whatever duties are necessary to accommodate the proceedings and ensure the integrity of the Department.

Internal Affairs Cases

Civilian Complaints	2010	2009	%Change
Force	2	6	-67%
Abuse of Authority	9	16	-44%
Discourtesy	8	20	-60%
Ethnic Slur	1	0	100%
Miscellaneous	6	5	20%
Total Internal Affairs Cases	26	47	-45%

Quality Assurance Unit

Lieutenant Cosmo Costa and Lieutenant Gary Robinson oversee the Quality Assurance Unit. The unit periodically conducts inspections and reviews of specific areas of the Department for the following reasons: Determine compliance with established policies and procedures to identify problem areas and opportunities for improvement that will, through training, positively enhance the Department's performance; Promote a method of operation to improve the quality and consistency of performance throughout the Department by using evaluations and a support system which includes training, guidance and follow-up review. This is accomplished through the use of specified areas of evaluation. These areas include, but are not limited to: Incidents, confiscated vehicles and auctions, summonses, evidence and found property, off-duty employment, sick time, traffic court appearances, video taping of bookings.

The Quality Assurance Unit evaluates these specified areas, and as training needs are identified, improves the performance of the Department. These evaluations are conducted on a regular basis to ensure that the quality of performance attained is continued.



2010 Citizen Police Academy Graduation

New Rochelle Police Foundation

The New Rochelle Police Foundation is a non-profit organization, which funds, assists and undertakes programs to strengthen the services and professionalism of the New Rochelle Police Department. Through this partnership, the Foundation stands ready to assist the New Rochelle Police to better serve our city and, in doing so, make the department one of the most admired in the country.

The New Rochelle Police Foundation recognizes the need to meet new challenges in law enforcement today, tomorrow and in the 21st century as the police profession continues to grow, change and adapt to new technologies and other developments.

The cost of training and equipment for the New Rochelle Police Department to respond effectively to a wide range of social problems far exceeds the tax dollars committed to law enforcement. For organizations like the New Rochelle Police Department to maintain a distinction of excellence in the services they provide, private sector assistance is needed. The following are some of the programs and activities sponsored by the New Rochelle Police Foundation:

- **Police-Community events**
- **Sponsoring of advanced training for Police**
- **Sponsoring of command staff attendance at professional seminars**
- **Verbal Judo seminars attended by all Department members**
- **Bicycles and uniforms for bicycle patrol officers**
- **Funding of K-9 unit**
- **Annual Police Award ceremonies**
- **Lapel microphones for every officer**
- **Rechargeable flashlights and chargers for every officer**
- **Fitness Equipment for Department Weight Room**
- **Custom made equipment bag for every officer**
- **TASER's for Critical Incident Unit and Supervisors**
- **State of the art Firearms Simulator**
- **Sponsoring of Harbor Unit Building**
- **Automated External Defibrillators**



(Top) 2010 Citizen Police Academy attendee on the Driving Simulator (Bottom) Monroe College students at 2010 Citizen Police Academy Graduation



The New Rochelle Police Department patch was designed in 1967. The Heraldic type symbol is divided into four squares. The upper left square contains a fleur-de-lis with 1688 underneath. The fleur-de-lis represents the French National Emblem. It was the French Huguenots who settled New Rochelle originally and incorporated it as a Village in 1688. The upper right box shows an old ship like those used in Trans-Atlantic crossings during the 1600's. The bottom left square shows a modern sailboat and represents New Rochelle's proximity to Long Island Sound and its five-mile coastline. The bottom right square with 1899 over a five-sided star represents the date New Rochelle became a City.

New Rochelle Police Department
Training Unit
Lieutenant Cosmo Costa, Training Director
Sergeant Calvin McGee, Training Supervisor
Do not reproduce without the permission of the Training Unit

